



# PSR Dispatch

## PACIFIC SOUTHWEST REGION

National Model Railroad Association®

VOLUME 26, ISSUE 4 — 4TH QUARTER, 2008

© 2008 Pacific Southwest Region, NMRA®



Another year has passed all too quickly. A busy year, with lots of model railroading events and things to do. Also a year of excitement, change and worry. It appears that next year will be much of the same, good and bad. But, we have an advantage over many people - a hobby that provides entertainment, challenge and a sense of accomplishment, at a price that is as affordable as we care to make it. So, I'm looking forward to 2009, with people to meet, models to build, and a Convention in Las Vegas to look forward to!

As I mentioned in the previous issue, Duane Buck has retired from the Contest Chairman position, and now Bill Jacobs (Cajon Division) has agreed to take on the duties. Many of you know Bill from contests over the years, and I'm sure you will find him a worthy successor to Duane. If you haven't had the pleasure yet, make a point of meeting him in Las Vegas in the Contest Room. Even better, enter a model in the contest, and get to

## From the Hot Seat!

Ben Sevier, PSR President  
president@psrnmra.org

work with him and the judges. You won't regret it. Bill, welcome aboard!

The PSR 2009 Convention will be held September 2nd through September 6th at the Texas Station Hotel in Las Vegas, NV. Bob Mitchell, the convention chairman, has promised a long list of great clinics and other events to entice and entertain you, so put it on your calendar today! More information will be in the next issue of the PSR Dispatch. Also, watch the PSR Website ([www.psrnmra.org](http://www.psrnmra.org)) and the new PSR Convention website ([www.psrconvention.org](http://www.psrconvention.org)) for up to date news and information.

By the way, one feature of the service that now hosts our website (and several of the Divisions, as well) is that we have email capability through the site. If you check the PSR Directory (here or online), you will notice that the email addresses of the officers and volunteers no longer show their personal email addresses, but one tied to their position. Any email sent to these addresses is automatically forwarded to the proper person, making sure your questions and comments are addressed quickly and by the right person.

You may notice this issue is smaller than usual, and contains several articles from publications of other Regions, but none from PSR members. I would love to see our members in print, but no one has been submitting anything. Are you aware that being published in the Dispatch, while not paying cash, does provide you points towards your Author AP Certificate? Your peers in the Region are interested in what you have done, and would like to hear about your layout, or special technique, or how you built that award winning (or not) model. I know I would, and I also know that everyone reading this issue has something of interest for the rest of us. So, get to work, and get published!

### In This Issue

Arizona Division .....	2
Cajon Division .....	2
Los Angeles Division .....	3
San Diego Division .....	3
Fireman's Seat .....	4
Railettes .....	4
Achievement Program .....	4
Add a Hill Brake to Hold Your Cars .....	6
Add Signs That Tell the Future .....	7
A Quick and Easy Repair to a Structure .....	8
Flag Stops .....	9
PSR Directory .....	10
Membership Form .....	BACK PAGE

# Division Director

## Arizona

Rick Watson  
Director@AzDiv-NMRA.org



## Cajon

Carl Heimberger  
CHeimberger@anaheim.net



The Arizona Division had a great summer meet in the cool (cooler than Phoenix!) of Flagstaff. Attendance was very good despite the price of gas. I personally was surprised at the turnout for the meet. We also had a new member enter models in the contest room and he won merit awards for both models. That was very encouraging. Our next meet will be in Tucson on November 8. We encourage members from the other divisions to join us. We will have a number of clinics and layout tours too. Information can be had on the Arizona Division website: [www.AzDiv-NMRA.org](http://www.AzDiv-NMRA.org)

The staffing of the division leadership is going well. We recently filled the role of Membership Chairman. Our new Membership Chairman will be the key point of contact for potential members and promotion of the NMRA, the PSR, and the Arizona Division. Our most recent event was the 'In the Heat' swap meet on July 26. The promoter regularly provides the Arizona Division with a free table which is used to promote the NMRA. We used this as an opportunity to promote the hobby, the NMRA, the PSR and the division. The next opportunity will be In the Heat on November 1.

The PSR elections are complete. Congratulations to Ben Sevier for his reelection as PSR President and a special congratulations to our own Don Stewart who was elected Vice President of the region! Acceptance of the e-version of the Spur Line continues to grow. We have about 1/3 of the membership subscribing to the electronic version and have had very positive feedback. We typically publish more pages, pictures, etc. in the electronic version. The print version is kept to six pages to control costs. Perhaps with recent consolidation of the division and region websites, we can use this opportunity to collaborate within the region on our publications.

The website consolidation occurred earlier this year. As many of you know, we launched the Arizona Division website in January. At the March PSR Board of Directors meeting, we discussed the consolidation of websites for the PSR and the four PSR divisions. At my urging, the PSR will pick up the tab for all the divisions. We also

Well here we are the last quarter of 2008 and another successful Barstow Meet under our belt. This meet included; 9 – clinics, 2 – prototype tours, the annual Harvey House Train Show and of course the famous Cajon Chinese Auction with around ninety items up for grabs. So once again we all owe Bob Mitchell a BIG THANK YOU for a great event. Our next major event will be the second annual Temecula Meet which will include the normal clinic, several prototype tours and this year with the help of the San Diego Division we will be heading into San Diego for layout tours. Look for more details on the Cajon web site and the next Order Board.

There are going to be some significant changes to the Division this next year, which will provide some challenges for the membership. The challenge is that both my term and Bob Mitchell's term as Director and Superintendent will end at the 2009 PSR/NMRA Convention, and both these positions will be vacant at the point. So it is time for all of you Cajon Member who truly love and care about this hobby to step forward to insure that the Cajon Division will continue to grow and provide quality programs to its membership. Please remember that every position within the PSR and all 4 Divisions are filled by volunteers who are willing to give of their time to help promote Model Railroading "The Worlds Greatest Hobby". For information on positions open please contact Bob Mitchell or myself and we will be glad to provide a job description.

My final challenge for the next 12 months will be the 2009 PSR/NMRA Convention in Las Vegas. I thank all of you who signed up to help but we are still short some key Committee Chairs and members so please join in and help. Remember this is Cajon's time to shine, and show the rest of the Region who we are and that we can deliver a quality Convention as we have done in 2001 and 2005. Please contact Bob Mitchell for information and join the convention team it will be a rewarding experience and the time served counts as credit to your MMR.



# Activity Reports



## Los Angeles

Paul Cutter  
patecu@sbcglobal.net



## San Diego

Don Fowler  
Donald.Fowler@sdsheiff.org

Now that most of the National Convention Committee members are fully recovered from the Convention, we are getting back to Division activities. In the past quarter, two open houses were held. Ron Varnell opened up his huge HO scale layout for viewing. Frank Kenny hosted his large N scale layout as an operating session; I have been told that everyone that attended had a great time.

By the time you read this, the L.A. Division will have hosted a model train show at South Coast Botanic Gardens in late October.

The L.A. Division is now working on plans for activities in 2009 and hope to have a varied program of activities.

I would like to wish everyone a very happy, healthy and peaceful holiday season.

Keep those tracks clean.



Cajon - Continued

have a good opportunity for the PSR and division webmasters to collaborate.

After almost a year in my role as director, I look back and realize we have accomplished quite a bit in the Arizona Division and in the PSR as well. I look forward to the second year of my term and hope to continue the positive impact. And please, if you have any feedback on how we can improve the division, the meets, the Spur Line, or the website, please let me know!

Finally, one of the best honors I have as Division Director is to choose a Member of the Year. This year's winner is known to many members for his service to the division. His selection was based on his contributions to the division for the past year. He is a tireless worker who diligently ensures timely mailing of the Spur Line and the distribution of posters and flyers for each Division Meet. So, I would like to extend my official and personal congratulations to Roger von Seeburg, the 2008 Arizona Division Member of the Year.

As I write this, I see that the holiday season is bearing down on us at a rapid rate. Where did the year go? A National Convention, four Division meets, open houses, rail fan trips, train shows and swap meets. All in all, it has been a very good year for model railroaders. One of my personal highlights was introducing my uncle, Byron Densford, to our hobby and sponsoring his NMRA membership!

At the San Diego Division, we enjoyed a great Summer Meet on August 9th at the home of MMR John Sigurdson who has a beautiful O scale railroad. This event included a BBQ/picnic and a tour of his layout. We enjoyed a lot of good food, fellowship and trains.

On November 15th, our Division will host its Fall Meet at the San Diego Model Railroad Museum. In addition to a potluck and business meeting, there will be clinics, a Chinese Auction, and a tour of the Museum layouts. Should be a great time so be sure to join us.

Remember that November is "National Model Railroad Month". This is a great opportunity to host an open house to introduce our hobby to others and get them involved. November 21st is the eighth annual "Take a Model Train to Work Day". I have a Z scale model railroad in a briefcase that works just perfect for this and it always gets a lot of attention. You could also bring a favorite model or photos of your railroad to share. Don't forget to take along some old model railroad magazines and some NMRA applications. Invite those who are interested to your next Division event and give them a copy of your newsletter.

Our Division Holiday Party will be held on December 13th at our home. We'll enjoy running trains on all the layouts, a pot luck dinner, a gift exchange, and some other surprises. Please bring your spouse and enjoy the great fellowship.

Most importantly, I'd like to wish you all a happy and memorable holiday season. May the New Year bring you good health, prosperity, and an exciting new season of model railroading!





# Fireman's Seat

Don Stewart, PSR Vice President  
vp@psrnmra.org

I attended the Cajon Division meeting in Barstow over the October 10 to 12 weekend. It was fun with Friday night Bingo for trains and a Saturday Chinese Auction. They had two Athearn engines, one with DCC and sound in the auction. Unfortunately I did not win either one. Also numerous clinics were presented. They were very informative and I enjoyed the ones I attended very much. Two prototype tours were also conducted. My point is this: With all the things offered, why were there not more people there? I am sure the economy has a big impact on this as well as people's busy schedules, but the information, prizes and fun sure made up for that. Plus I got to see some friends from other Divisions. A few LA Division members attended. I think I was the only AZ Division member there. I do not remember seeing anyone from the San Diego Division.

So what did I get out of the meeting?

- Renewed old friendships and made a few new ones
- Won four prizes
- Learned about metal etching (I have been thinking of doing this) and scratchbuilding (some new tips from an MMR)
- Saw some live trains on the trip there and back
- Relaxed and had fun

Cajon (Bob Mitchell), you did a great job!



# Achievement Program

Don Stewart, AP Program Manager  
ap@psrnmra.org

I attended the Cajon Division's Barstow meet. It was very enjoyable with lots of activities and real trains to watch. I judged the model and Photography contests. There were 3 models and 7 photographs. One of the models was outstanding and earned a Merit Award. Congratulations Bill Jacobs!

Mike Grippo and Lawrence Dewsnap of the Cajon Division were presented their Golden Spike Awards by

# Railettes

Janet Spooner, Railette Chair  
railette@psrnmra.org

Hi Ladies,

This past July, the National Model Railroad Association held their convention in Anaheim, right in our own back yard. Many members and spouses of PSR members were extremely active in making it a very successful time. Diane Forbes did an outstanding job on the Railette program. We had so many women that Hartford, next NMRA convention site, has given us a bigger room. What a compliment to all Diane did. Many of the presenters were PSR ladies and they made us proud. What a talented bunch of ladies we have!

Now to November, there has been a change of plans. I found the directions to making snowmen out of marshmallow foams. No, not real marshmallows, they would never make it to Christmas without being eaten. They may not have made it through the meet without being eaten. You should have time to make a couple of them and they would make a cute centerpiece for the table. This should take both morning and afternoon as it will take time for the paint to dry. All supplies will be available at the meet.

Next September the PSR convention will be in Las Vegas, that's right Las Vegas, the city where what happens there, stays there. We will be staying at the Texas Station and the Cajon Division is planning a fun time for all of us. I have already lined up Linda Irick and Kim Fowler to present clinics for us. I will also be do a clinic for all of you. The clinic time for Railettes will be less than usual but as we are in Vegas, I feel that we ladies can find something to do. If not shame on us.

Hope to see you in Tucson in November, and in Las Vegas next September. Of course, there will be a meet in Phoenix in March and one somewhere in the cool country in the summer.



Bill Jacobs.

Work is continuing on the AP presentations and live help clinics for the Region Conventions. These will be rolled out at the PSR 2009 Convention in Las Vegas. So, plan to bring your AP information to the convention for help in completing the forms. The dates and times will be published in the Convention Timetable.



## Rails Across the Bay 2009 PCR Convention

April 15 – 19, 2009  
Marriott Hotel in Fremont, CA

We are looking for clinic presenters. Please contact Jim Long if interested  
530-676-1798  
jimclong@sbcglobal.net

Convention Site: <http://www.pcrnmra.org/conv2009/>

### PSR Elections Coming Up - Your Input is Needed

The terms of the Directors of each Division are coming to an end in September at the Annual Membership Meeting during the 2009 PSR Convention in Las Vegas. If you know of someone who is interested in representing your Division on the PSR Board of Directors, or are interested yourself, please contact Tom Draper prior to the Mid-Year BOD meeting in March, 2009:

Tom Draper, Nominating Committee Chair  
10837 N. 34th Place  
Phoenix, AZ 85028-3310  
(602) 953-1681 email: TCDRaider@aol.com

## PSR Dispatch Subscriptions

### Electronic Delivery

Send an e-mail to [psrdispatch@psrnmra.org](mailto:psrdispatch@psrnmra.org) with your name, e-mail address, NMRA number and division. Use "Electronic Delivery Subscription" as the subject of your e-mail. Or, if you are reporting a change of e-mail address, use "E-Mail Address Change" as the subject of your e-mail. You will be notified when the new issue is available as a PDF download on the PSR website.

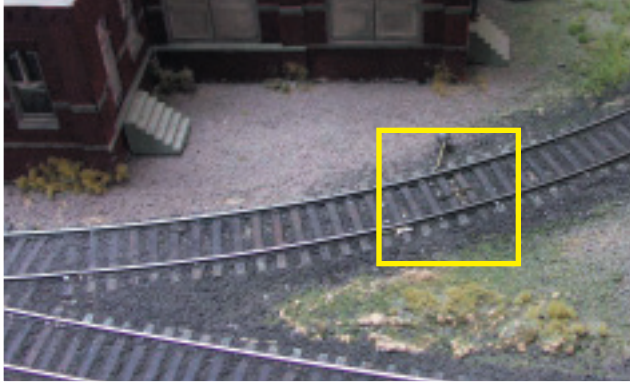
### Regular Mail Subscription

Subscribe for one or two years when you join the NMRA or renew your membership. A one-year subscription is \$8.00; a two-year subscription is \$16.00. New and renewal membership forms are available in the Dispatch, from the membership chairman for your Division or from the NMRA website at <http://www.nmra.org/>. The website offers both online and mail-in options.

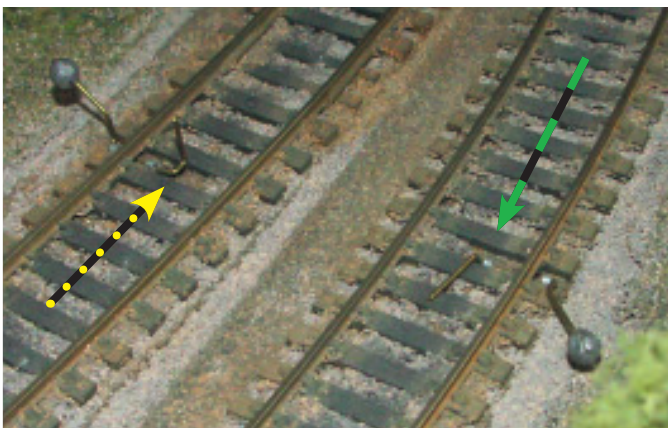
For more information about electronic delivery and regular mail subscriptions, visit the Pacific Southwest Region website at <http://www.psrnmra.org/>.

# Add a Hill Brake To Hold Your Cars

By Paul Voelker



Many years ago, before he became an MMR, Ned Spiller designed and built several of these "Hill Brakes" for use on John Travis' layout. John needed something to keep cars on a hill while switching between switching moves in two locations. Ned came up with this ingenious and simple little device consisting of a split fishing weight, a piece of brass wire and two "eyebolts" made out of flat wire. Because of the way it is designed, when the brake is in the raised position, a car rolling downhill will be stopped against the upright wire when the axle of the lead wheel of a truck comes up against the brake (yellow/dotted arrow below). However, when a car or locomotive is running uphill (green/dashed arrow below) the brake will fall down to the lowered position once struck allowing unimpeded passage.





# Add Signs That Tell The Future

By Ron Einarson  
President, NMRA-Canada

Have an area on your layout that is sitting bare? Is it waiting for a structure or industry you have yet to build or yet to purchase then build? Is the area always in question by visitors? Why not do what one of our members did on the Winnipeg Model Railroad Club's

Gateway Western layout: put up a sign announcing the arrival of the new industry to the site.

Larry Leavens had volunteered to build a Walther's Oil Depot for the layout and got tired of hearing people saying, "What's going over there?" or "Do you have plans for the area?" or "That would be a great place for \_\_\_\_!" After hearing enough of this Larry made the sign in the photo and planted it at the site one evening. The sign not only quieted the questions about the use of the area but brought very positive feedback about what

a great idea it is to advertise upcoming projects, what a great looking sign, and what a clever idea to model what the prototype does.



So if you plan to add something to your layout that is still on the workbench or still awaiting funding, why not add a sign to advertise what is coming? It might even inspire you to build faster or save harder in order to take the sign down and put the new structure or industry in place. Don't forget to have a groundbreaking ceremony and a ribbon cutting ceremony as things progress. To make the sign you could use styrene plastic or wood. The sign can be made on a computer and printed to paper or you could use dry transfer lettering. The

actual size of the sign will be determined by the lettering and any logos put on, but 0.20" styrene or wood should do for the backing. For the legs I suggest 6"x6" pieces to match the prototype. You could use 4"x4" posts but they might be undersized and, as in real life, easy to push over and break, like what happens in the construction business.

Well that's all there is to sprucing up your layout while you prepare to fill a blank area on it. Thanks to Larry for the clever idea.



## This Could Be YOUR Article!

This space was reserved for YOUR article, but you never sent it in!

The articles on these pages are from other Regions - interesting, short, to the point, but no better than you, an active model railroader in the PSR, can do.

Article from PSR members get priority on space in this publication. Become an author, not just a reader! Don't worry about format or spelling - those are easily fixed. What isn't so easy is having what you know available for others to see and enjoy - if you don't submit.

I'll be watching for an email from you - soon!

# RESERVED

# A Quick and Easy Repair to a Structure

By Ron Einarson

President, NMRA-Canada

Ever find or purchase a used structure that loses something on its way home? I got one structure from my late friend Charlie that was missing a window. It was there when I left his place so I probably knocked it out while bringing it home or it got lost as I moved it around the layout / workbench.

No problem, right? Just put a new window in and that ends the drama. Sounds quick and easy but Charlie was an artist and mixed his own paints to give his

"stuff" a unique flavour. I dug into my spare parts bin and found the matching window to the structure, then spent two weeks trying to match the window colour. After many futile efforts I put the structure back on the shelf until I could decide what to do.

One Saturday afternoon I was moving the structure while dusting of the shelf when an idea stuck me. Why not just board up the window? Too simple. I grabbed my wood remnants box, found several pieces of stained wood, measure the opening, set my chopper to the correct length and proceeded to cut the necessary number of pieces. Some white glue was used to affix the wood to the empty window opening. It took all of 15

minutes to make the structure complete and have it back on the layout. Quick and easy, once the inspiration hit me.



Have a friend interested in joining the NMRA? Here's a great way to get them started - cut it out or make a copy!

## Introducing the best deal in model railroading.

**Join the NMRA for 6 months for just \$9.95\*!**

### Sign me up!

Fill out this form and include your payment. **U.S.:** Send \$9.95 (U.S.) to NMRA-Rail Pass Membership, 4121 Cromwell Road, Chattanooga, TN 37421-2119. **Canada:** Send \$9.95 (Cdn) to NMRA-Canadian Rail Pass Membership, 69 Schroder Cres., Guelph, ON N1E 7B4, Canada.

Name \_\_\_\_\_

Address \_\_\_\_\_

City/State/Zip \_\_\_\_\_

Phone (\_\_\_\_) \_\_\_\_\_

Email \_\_\_\_\_

☐ Check ☐ Credit card

Credit Card # \_\_\_\_\_

Credit Card Exp \_\_\_\_\_

Signature \_\_\_\_\_

\*Rail Pass offer is for new members and those who have not been NMRA members for two years or more. Individuals can join at Rail Pass rates only once; membership renewal will be at the regular membership rate. Rail Pass members can attend conventions and participate in contests, but cannot vote or hold office and will not receive a New Member Pak.

- Have easy access to one of the world's largest railroad libraries...which includes over 100,000 prototype photos, 6,000 books, and over 50,000 modeling, prototype and historical society magazines
- Experience the fellowship and fun of getting modeling help and discussing the hobby with other members in your area
- Receive reduced rates on special insurance for your layout or collection
- Get admission to local model railroad meetings & events
- Receive 6 monthly issues of *Scale Rails* magazine
- Have access to standards info and data sheets
- Be a part of programs like "Modeling With The Masters," the Pike Registry, Estate Counseling, contests, clinics, the Achievement Program and more!

**Also available in Canada!**



Visit [www.nmra.org](http://www.nmra.org) to see what you're missing!

**So much bang.  
So few bucks.**



# Flag Stops

Lindsay Smith, PSR Member Aid  
wlindsays@adelphia.net

We have amassed this information from various sources. Some of the events have been submitted by sponsors. Please send corrections, additions and future events to me at [wlindsays@roadrunner.com](mailto:wlindsays@roadrunner.com). I can also be reached at (909) 599-0182. I encourage the use of this list to promote the hobby and help others enjoy railroading and modeling.

## December

- 6, 7 Great Train Expo Ventura: Ventura Co. Fairgrounds/ Seaside Park . Successor to the Great American Train Show (GATS) <http://www.trainexpoinc.com/>
- 13 San Diego Division Holiday Open House, Don & Kim Fowler's, [sddiv@sbcglobal.net](mailto:sddiv@sbcglobal.net)
- 13, 14 Great Train Expo Del Mar. Del Mar Fairgrounds. Successor to the Great American Train Show (GATS) <http://www.trainexpoinc.com/>
- 12 Pacific Railroad Society Monthly Meeting. 1930 (7:30 PM) to 2130. Joslyn Center (in Story Park) 210 North Chapel Ave. Alhambra, CA 91801 <http://www.pacificrailroadsociety.org/>
- 19 ERHA Monthly Meeting. 1930 (7:30 PM) to 2130. Community Room of the South Pasadena Library, 1059 El Centro Street in the city of South Pasadena. (between Diamond & Fairview Avenues) <http://www.erha.org/erhainfo.htm>

## 2009

### January

- 3, 4 Great Train Expo Anaheim. Anaheim Convention Center. Successor to the Great American Train Show (GATS) <http://www.trainexpoinc.com/>
- 9 Pacific Railroad Society Monthly Meeting. 1930 (7:30 PM) to 2130. Joslyn Center (in Story Park) 210 North Chapel Ave. Alhambra, CA 91801 <http://www.pacificrailroadsociety.org/>
- 16 ERHA Monthly Meeting. 1930 (7:30 PM) to 2130. Community Room of the South Pasadena Library, 1059 El Centro Street in the city of South Pasadena. (between Diamond & Fairview Avenues) <http://www.erha.org/erhainfo.htm>

### February

- 13 Pacific Railroad Society Monthly Meeting. 1930 (7:30 PM) to 2130. Joslyn Center (in Story Park)

210 North Chapel Ave. Alhambra, CA 91801  
<http://www.pacificrailroadsociety.org/>

- 20 ERHA Monthly Meeting. 1930 (7:30 PM) to 2130. Community Room of the South Pasadena Library, 1059 El Centro Street in the city of South Pasadena. (between Diamond & Fairview Avenues) <http://www.erha.org/erhainfo.htm>

### March

- 7 Orange Empire Railroad Museum (OERM) Swap Meet. Admission for non-members \$5, or included with all day pass for trolley and train rides \$12 for adults, children ages 5-11 are \$8. Set up time for sellers is 7am. Sellers bring own tables and chairs. Orange Empire Railway Museum 2201 S. "A" Street Perris, CA 92570 Information: 951-943-3020 or 951-657-2605 <http://www.oerm.org/pages/calendar.html>
- 21, 22 Great Train Expo Costa Mesa. Orange County Fairgrounds. <http://www.trainexpoinc.com/>



**So much in store for you at**

**HN2009**

JULY 5-11, 2009 • HARTFORD, CT.

The NMRA national comes to Connecticut! Registration forms are now available at [www.HN2009.org](http://www.HN2009.org). Watch the web site for full details.

**Don't wait! Sign up today!**



**Hartford National**

JULY 5-11 • [WWW.HN2009.ORG](http://WWW.HN2009.ORG)

NMRA 2009



# Pacific Southwest Region ~ Directory ~

## MANAGEMENT & STAFF

<b>President</b>	Ben Sevier 12793 War Horse Street, San Diego, CA 92129 (858) 538-9863, <a href="mailto:president@psrnmra.org">president@psrnmra.org</a>	<b>Western Region Director</b>	Miles Hale, MMR 5608 N. Mercier Drive, Kansas City, MO 64118 (502) 499-5685, <a href="mailto:westdir@hq.nmra.org">westdir@hq.nmra.org</a>
<b>Vice President</b>	Don Stewart 2722 E. Bighorn Avenue, Phoenix, AZ 85048-8984 (480) 759-5019, <a href="mailto:vp@psrnmra.org">vp@psrnmra.org</a>	<b>Achievement Program Manager</b>	Don Stewart 2722 E. Bighorn Avenue, Phoenix, AZ 85048-8984 (480) 759-5019, <a href="mailto:ap@psrnmra.org">ap@psrnmra.org</a>
<b>Secretary</b>	David Irick 5722 W. Cochise Drive, Glendale, AZ 85302-1318 (623) 435-8534, <a href="mailto:secretary@psrnmra.org">secretary@psrnmra.org</a>	<b>PSR Dispatch Editor &amp; Ballots</b>	Ben Sevier 12793 War Horse Street, San Diego, CA 92129 (858) 538-9863, <a href="mailto:psrdispatch@psrnmra.org">psrdispatch@psrnmra.org</a>
<b>Treasurer &amp; Nominations</b>	Tom Draper, HLM 10837 N. 34th Place, Phoenix, AZ 85028-3310 (602) 953-1681, <a href="mailto:treasurer@psrnmra.org">treasurer@psrnmra.org</a>	<b>Webmaster</b>	Ben Sevier 12793 War Horse Street, San Diego, CA 92129 (858) 538-9863, <a href="mailto:president@psrnmra.org">president@psrnmra.org</a>
<b>Member Services</b>	Debbie Draper 10837 N. 34th Place, Phoenix, AZ 85028-3310 (602) 953-1681, <a href="mailto:membership@psrnmra.org">membership@psrnmra.org</a>	<b>Publication Advertising</b>	(vacant)
<b>Member Aid</b>	Lindsay Smith 1446 Paseo Garcia, San Dimas, CA 91773-3915 (909) 599-0182, <a href="mailto:memberaid@psrnmra.org">memberaid@psrnmra.org</a>	<b>Historian</b>	Bill Mergard 5210 Carmelynn St., Torrance, CA 90503 (310) 371-1971, <a href="mailto:history@psrnmra.org">history@psrnmra.org</a>
<b>Contest</b>	Bill Jacobs 4813 Plata del Sol Drive, Las Vegas, NV 89121 (702) 456-4476, <a href="mailto:contest@psrnmra.org">contest@psrnmra.org</a>	<b>By-Laws &amp; Operations Manual</b>	Frank Tepedino 4544 Calle De Vida, San Diego, CA 92124-2304 (619) 528-0200, <a href="mailto:CondorGrup@aol.com">CondorGrup@aol.com</a>
<b>Education</b>	(vacant)	<b>Layout Coordination</b>	(Vacant)
<b>Railettes</b>	Janet Spooner 10015 W Royal Oak Rd #138, Sun City, AZ 85351 (623) 977-6760, <a href="mailto:railettes@psrnmra.org">railettes@psrnmra.org</a>	<b>"Chief Hobo-in-Charge"</b>	Bill Mergard 5210 Carmelynn St., Torrance, CA 90503 (310) 371-1971, <a href="mailto:hobos@psrnmra.org">hobos@psrnmra.org</a>

## DIRECTORS



**Arizona**  
Rick Watson  
6231 S. Rita Lane  
Tempe, AZ 85283-3023  
(602) 319-0265  
[Director@AzDiv-NMRA.org](mailto:Director@AzDiv-NMRA.org)



**Los Angeles**  
PAUL CUTTER  
3042 Earlmart Drive  
Los Angeles, CA 90064-4632  
(310) 837-5269  
[director@ladiv-nmra.org](mailto:director@ladiv-nmra.org)



**Cajon**  
Carl Heimberger  
2125 E. Lincoln Avenue  
Anaheim, CA 92806-4105  
(714) 776-6394  
[cheimberger@anaheim.net](mailto:cheimberger@anaheim.net)



**San Diego**  
Don Fowler  
10768 Sayers Court  
Santee, CA 92071  
(619) 258-3529  
[director@sandiegodivision.org](mailto:director@sandiegodivision.org)

## PSR Dispatch

Published quarterly by the Pacific Southwest Region of the National Model Railroad Association®.

Material for publication must be received by the deadlines shown in the Submission Schedule, below.

Opinions expressed herein are those of the authors or the editor and are not necessarily those of the PSR. Permission to quote is granted by giving credit to the PSR, the *PSR Dispatch* and the individual authors.

Email articles to: [psrdispatch@sbcglobal.net](mailto:psrdispatch@sbcglobal.net), or surface mail to 12793 War Horse Street, San Diego, CA 92129-2219. Photographs (prints only) should be surface mailed. Digital images may be emailed or surface mailed. Mailed items may be on a 3.5 inch PC disk, standard CD, handwritten, typed (new or good clean ribbon) or printed on any type of printer. All photographs, disks and CD's will be returned after publication if requested. Questions or Comments? Email the editor: [psrdispatch@sbcglobal.net](mailto:psrdispatch@sbcglobal.net)

✦ ✦ ✦ ✦ ✦ ✦ ✦ ✦

Printed by:  
Electronic Printing Solutions,  
4898 Ronson Court, Suite B  
San Diego, CA 92111

The "PSR Dispatch" is composed using Adobe "Indesign CS".  
Headline Fonts: Bell Gothic  
Text Fonts: Adobe Caslon

## NEWSLETTERS



### Spur Line

Editor — Rick Watson  
6231 S. Rita Lane, Tempe, AZ 85283  
(602) 319-0265, [SpurLine@AzDiv-NMRA.org](mailto:SpurLine@AzDiv-NMRA.org)



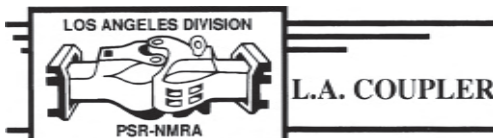
CAJON DIVISION, PACIFIC SOUTHWEST REGION NMRA

### The Order Board

Editor — Bob Mitchell  
21460 Walnut Street, Wildomar, CA 92595  
(951) 440-9729, [Cajondivision@coastinet.com](mailto:Cajondivision@coastinet.com)



Editor — Gary Robinson  
2319 Conway Drive, Escondido, CA 92026-1212  
(760) 839-5877, [mailhook@sandiegodivision.org](mailto:mailhook@sandiegodivision.org)



Editor — Mary Barstow  
6930 Clovercliff Drive, Rancho Palo Verdes, CA 90275  
(310) 377-9762, [lscoupler@ladiv-nmra.org](mailto:lscoupler@ladiv-nmra.org)

Back issues for *PSR Dispatch* and all four of the Division newsletters are available in PDF format from TrainNet.org at [www.trainnet.org](http://www.trainnet.org).

## ON THE WEB

### Home Page

[www.psrnmra.org](http://www.psrnmra.org)

[webmaster@psrnmra.org](mailto:webmaster@psrnmra.org)

### Arizona Division

<http://www.azdiv-nmra.org/>

### Cajon Division

<http://www.cajondiv.org/>

### Los Angeles Division

<http://www.ladiv-nmra.org>

### San Diego Division

<http://www.sandiegodivision.org>

### National Model Railroad Association

<http://www.nmra.org>

### On the PSR Homepage

1 - Current issues of the *PSR Dispatch* and all four of the Division newsletters (in PDF format).

2 - PSR 2007 Convention

Contest Winners - photos.

3 - PSR Governing Manuals

To send email to anyone in this directory, go to the PSR Web Site [www.psrnmra.org](http://www.psrnmra.org) and click on their email address in the appropriate section.

### Submission Schedule and Planned Topics

Issue	Deadline
27/1	18 January 2009
27/2	19 April 2009
27/3	22 August 2009
27/4	18 October 2009
28/1	19 January 2010
28/2	17 April 2010

Topics
PSR 2009 Convention (Cajon) info
Director Elections, PSR 2009 Convention info
Election Results, PSR 2009 Convention info
PSR 2009 Convention Report and Awards listing
PSR 2010 Convention (San Diego) info
Office Elections, PSR 2010 Convention Info



## NMRA MEMBERSHIP APPLICATION - PSR

Please accept my application for membership renewal or new membership in the NATIONAL MODEL RAILROAD ASSOCIATION, which includes the PACIFIC SOUTHWEST REGION and my local PSR Division.

*New* ☐ *Renewal* ☐ *NMRA #*  *PSR #*

Name				
Address				
City		State		Zip
Phone		Birth Date		Scale
Email		Occupation		

<i>NMRA Membership Type - circle your choice of options</i>	<i>1 Year</i>	<i>2 Years</i>	<i>Total</i>
<b>Member</b> - All rights and benefits - includes subscription to NMRA <i>Scale Rails</i>	\$51.00	\$102.00	
<b>Member</b> - All rights and benefits - <b>without</b> subscription to NMRA <i>Scale Rails</i>	\$36.00	\$72.00	
PSR Dispatch subscription - Must be NMRA member to subscribe	\$8.00	\$16.00	
<b>Family</b> - Spouse or minor child of above member in good standing. No NMRA Scale Rails or voting rights. Provide family members name and date of birth here: Name: _____ DOB: _____	\$7.00	\$14.00	
<b>Student</b> - any person 18 yrs and under or student between the ages of 19 - 25 yrs possessing valid student ID. All rights and benefits and NMRA Scale Rails	\$24.00	\$48.00	
<b>Sustaining</b> - Mandatory for group memberships (Clubs, Associations, Businesses). All rights and benefits and NMRA <i>Scale Rails</i>	\$102.00	\$204.00	
<b>TOTAL DUES AND SUBSCRIPTIONS PAYMENT ENCLOSED</b> (Make checks payable to NMRA)			

<b>Credit Card</b>	MasterCard	VISA	AMEX	Diner's Club	Discover
<b>Card #</b>		CV#	<b>Issued To</b> (print)		
<b>Expiration</b>		<b>Signature</b>			

Month                      Year

**MAIL TO:** Debbie Draper, Membership, 10837 N. 34th Place, Phoenix, AZ 85028-3310



**PSR DISPATCH**

Official Publication of the  
Pacific Southwest Region

National Model Railroad Association®

POSTMASTER: Please send address changes to:  
10837 N. 34th Place, Phoenix, AZ 85028-3310

PRSRT STD  
 U.S. POSTAGE  
 PAID  
 SAN DIEGO, CA  
 PERMIT NO.751

